



# AXIS 213 PTZ Network Camera

*Pan, tilt and zoom live video  
directly over your network*

AXIS 213 PTZ / 26 ,  
12 , Night Vision  
All in One .

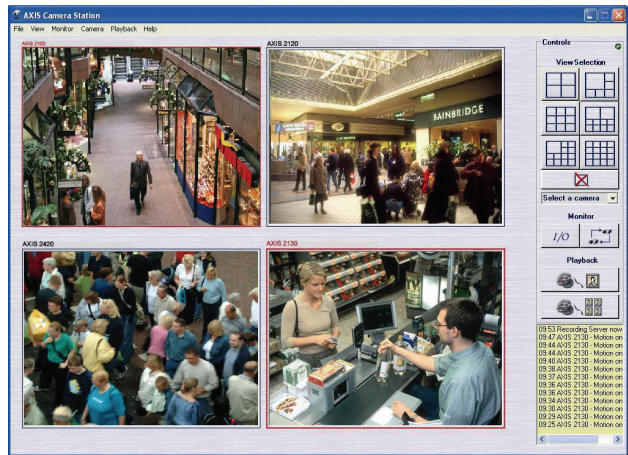
AXIS 213 PTZ Motion-JPEG MPEG-4  
. 20 1 , Pre/post

IR 가  
가

AXIS 213 CM(Connection Module)  
2 , 3

가 .

AXIS 213 PTZ 가 IP  
, PC ,  
. AXIS 213 PTZ



■ PTZ , 26 ,

■ , 가

■ Motion-JPEG MPEG-4 ,

■ 704 x 480 30 fps

■ AXIS 213 CM  
/ 가 ,



Specifications			
<b>Models</b>	AXIS 213 PTZ 50 Hz (PAL) AXIS 213 PTZ 60 Hz (NTSC) Supports both desktop and ceiling mounting	<b>Installation, management and maintenance</b>	Installation tool on CD and web-based configuration Configuration backup and restore Firmware upgrades over HTTP or FTP over TCP/IP, firmware available at <a href="http://www.axis.com">www.axis.com</a>
<b>Image Sensor</b>	1/4" Interlaced CCD	<b>Video access from Web browser</b>	Camera live view for up to 20 clients, sequence tour capability*
<b>Lens</b>	3.5 – 91 mm, F1.6 – F4.0, motorized zoom lens, horizontal viewing angle: 42 – 1.7°, auto focus, 26x optical and 12x digital zoom	<b>Minimum Web browsing requirements</b>	Pentium III CPU 500 MHz or higher, or equivalent AMD Athlon Memory 128 MB RAM AGP graphic card, Direct Draw, 16 MB video memory (32/64 MB recommended for high resolutions/color depths) Windows XP, 2000 NT4.0, ME or 98 (Motion JPEG only) Internet Explorer 5.x or later For other operating systems and browsers see <a href="http://www.axis.com/techsup">www.axis.com/techsup</a>
<b>Minimum illumination</b>	Color mode: 1 lux, F1.6 IR mode: 0.1 lux, F1.6; using built-in IR light in complete darkness up to 3 m (9.8ft)	<b>System integration support</b>	Powerful API for software integration available at <a href="http://www.axis.com">www.axis.com</a> , AXIS VAPIX API, AXIS Media Control SDK, event trigger data in video stream, embedded scripting, customized HTML pages Embedded operating system: Linux 2.4
<b>Video compression</b>	Motion JPEG MPEG-4 Part 2 (ISO/IEC 14496-2), Profiles: ASP and SP	<b>Supported protocols</b>	IP, HTTP, TCP, ICMP, RTSP, RTP, UDP, IGMP, RTCP, SMTP, FTP, DHCP, UPnP, ARP, DNS, DynDNS, SOCKS, NTP. More information on protocol usage available at <a href="http://www.axis.com">www.axis.com</a>
<b>Resolutions</b>	Resolutions 4CIF, 2CIFexp, 2CIF, CIF, QCIF max 704x480 (NTSC) 768x576 (PAL) min 160x120 (NTSC) 176x144 (PAL)	<b>Applications (not incl.)</b>	AXIS Camera Station – Surveillance application for viewing, recording and archiving up to 25 cameras AXIS Camera Management – Video installation and management tool Download for free at <a href="http://www.axis.com">www.axis.com</a> AXIS Camera Explorer – Basic software for viewing See <a href="http://www.axis.com/partner/adp_partners.htm">www.axis.com/partner/adp_partners.htm</a> for more software applications via partners
<b>Frame rate (NTSC/PAL)</b>	Motion JPEG: Up to 30/25 fps at 4 CIF MPEG-4: Up to 30/25 fps at 2CIF Up to 21/17 fps at 4CIF	<b>Included Accessories</b>	Power supply 13 V DC, ceiling mount, rubber feet kit for desktop use, Quick Installation Guide, CD with installation tool, software and User's Manual. MPEG-4 decoder (Windows), MPEG-4 licences (1 encoder, 1 decoder)
<b>Video streaming</b>	Simultaneous Motion JPEG and MPEG-4 Controllable frame rate and bandwidth Constant and variable bit rate (MPEG-4)	<b>Accessories (not incl.)</b>	AXIS 213CM Connection Module** – provides duplex audio, I/O and analog video output IP65-rated Dome Housing for installation of the camera in outdoor or adverse, indoor environments, Power over Ethernet midspans IR Illuminators AXIS 292 Network Video Decoder AXIS MPEG-4 Decoder 10 user license pack
<b>Image settings</b>	Compression levels: 11 (Motion JPEG)/23 (MPEG-4) Rotation: 90°, 180°, 270° Configurable brightness, white balance, exposure control, backlight compensation, Color/BW, noise reduction, De-interlace (4CIF Resolution) Overlay capabilities: time, date, text or image	<b>Approvals</b>	CE Compliant according to: EN55022: 1998 Class B, EN55024: 1998 A1:2001, EN61000-3-2:2000, EN61000-3-3:1995 A1:2001 FCC Part 15, Subpart B Class B, VCCI Class B C-tick AS/NZS 3548 Safety: UL and cUL (power supply). EN60950
<b>Pan/Tilt/Zoom</b>	Pan angle range: 340 degrees, Tilt angle range: 100 degrees Zoom: 26x optical, 12x digital 20 preset positions, PTZ control queue Designed for operator control*	<b>Dimensions (HxWxD) and weight</b>	130 x 104 x 130 mm (5.12" x 4.09" x 5.12") 700 g (1.55 lb) excl. power supply
<b>Audio</b>	G.711 PCM 64kbit/s, G.726 ADPCM 32 or 24 kbit/s, full duplex, half duplex, simplex or audio off**		
<b>Security</b>	Multiple user access levels with password protection IP address filtering		
<b>Alarm and event management</b>	Events triggered by built-in motion detection, external inputs** or according to a schedule Image upload over FTP, email and HTTP Notification over TCP, email, HTTP and external outputs** Pre- and post alarm buffer of 6 MB		
<b>Connectors</b>	Ethernet 10BaseT/100BaseTX, RJ-45 26-pin multi-connector (to Connection Module)**		
<b>Processors and memory</b>	CPU: ETRAX 100LX 32-bit RISC CPU Video processing and compression: ARTPEC-2 RAM: 32 MB, Flash: 4 MB Battery backed up by real-time clock		
<b>Power</b>	13 V DC, max 24 W external power supply		
<b>Operating conditions</b>	5 – 40 °C (41 – 104 °F) Humidity 20 – 80% RH (non-condensing)		

\* Not designed for continuous PTZ movements e.g. Guard tour. For continuous movement, please see Axis network dome offering



**AXIS 213CM Connection Module	
<b>Connectors</b>	2 alarm inputs, 3 outputs Composite video: 1 BNC output
<b>Audio</b>	Line in (3.5 mm jack), Line out (3.5 mm jack)
<b>RS-232</b>	9-pin D-Sub
<b>Connection cable</b>	1 m (3.3 ft)

[www.axis.co.kr](http://www.axis.co.kr)